

Logistics Operations Engineer

Fulltime | Lancaster, United States

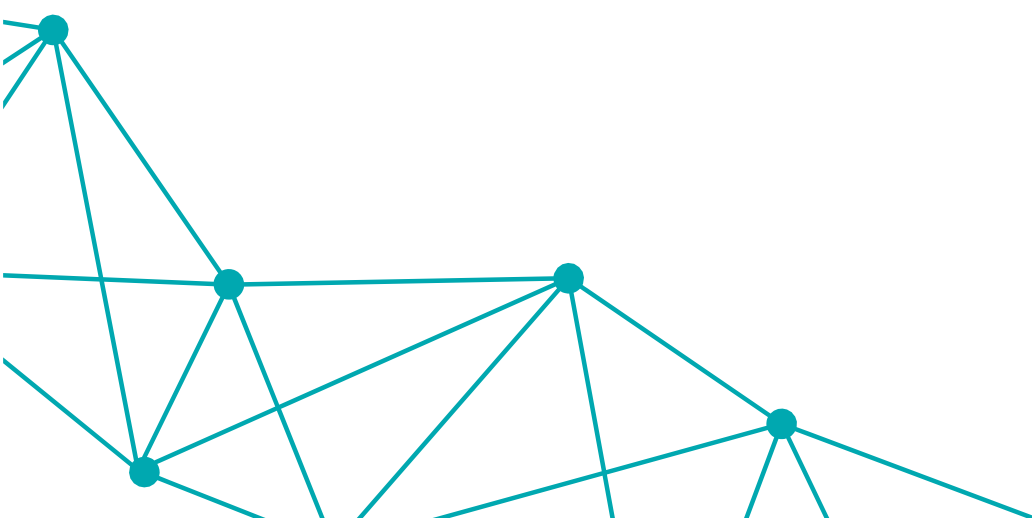
WHO WE ARE

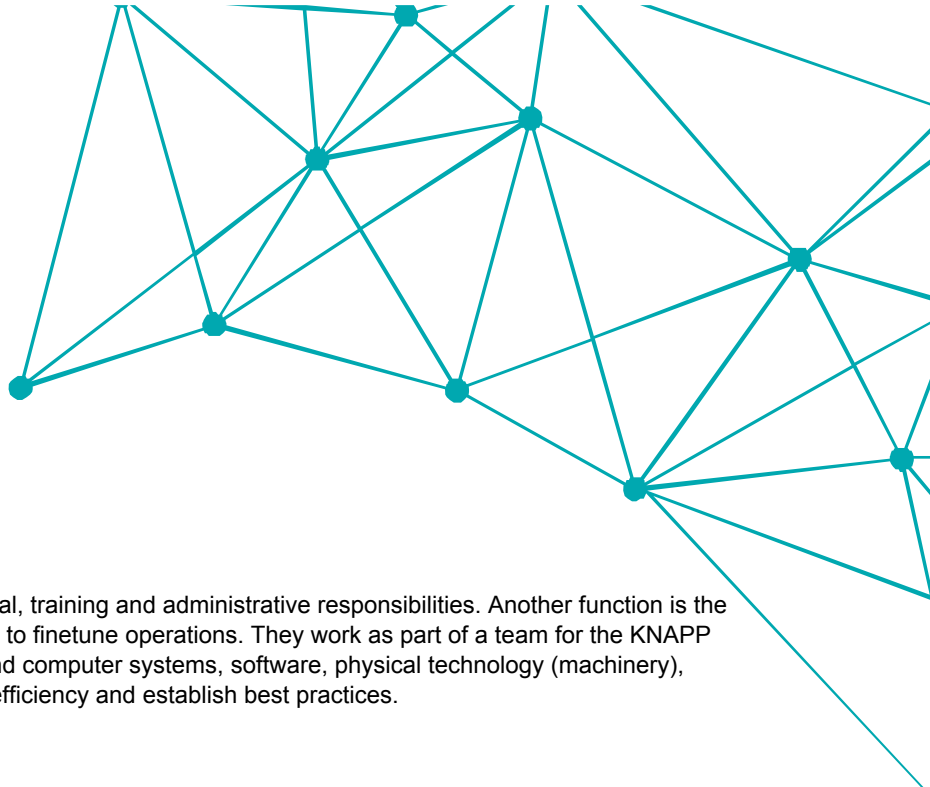
At KNAPP (pronounced K-NAP, not Nap!), we “Make Complexity Simple” by offering intelligent solutions for digitizing and automating everything from production and distribution to the last mile and stores. We are the customer’s value tech chain partner, which means partnering with the customer to create the most value within each link in their supply chain. Leveraging the latest software, AI and Robotics technology, we continue to disrupt the logistics automation industry for the world’s industry leaders in grocery, healthcare, retail, e-commerce, apparel & manufacturing.

We are a global company with our US headquarters located just North of Atlanta in Kennesaw, GA. KNAPP specializes in automated solutions for both WMS (Warehouse Management Systems) and WCS (Warehouse Control Systems) for B2B (Business to Business) and B2C (Business to Consumer) customers. We are a growing company of over 7,200 employees worldwide and in over 50 countries that is privately held, with 7% of our revenue reinvested in R&D, ensuring a strong and vibrant future! Join us and see how you can help change the world! For more information, visit www.knapp.com.

WHAT YOU GET TO DO

The task of a Logistic Operations Engineer is to make sure work is planned with the focus of the business in mind. They are also the point of contact from Service Desk to determine the root cause analysis for all P1/P2/P3 issues. They provide data capture around KPI's that feed into the daily/monthly reviews. An Operations Engineer handles all matters to the logistic operations and its machinery such as Incident, Problem and Change Management.





The role of an LOE therefore combines technical, training and administrative responsibilities. Another function is the coordination between KNAPP and its customer to finetune operations. They work as part of a team for the KNAPP customer and interact with the Service Desk and computer systems, software, physical technology (machinery), engineers and end users to increase stability, efficiency and establish best practices.

Essential Functions and Responsibilities:

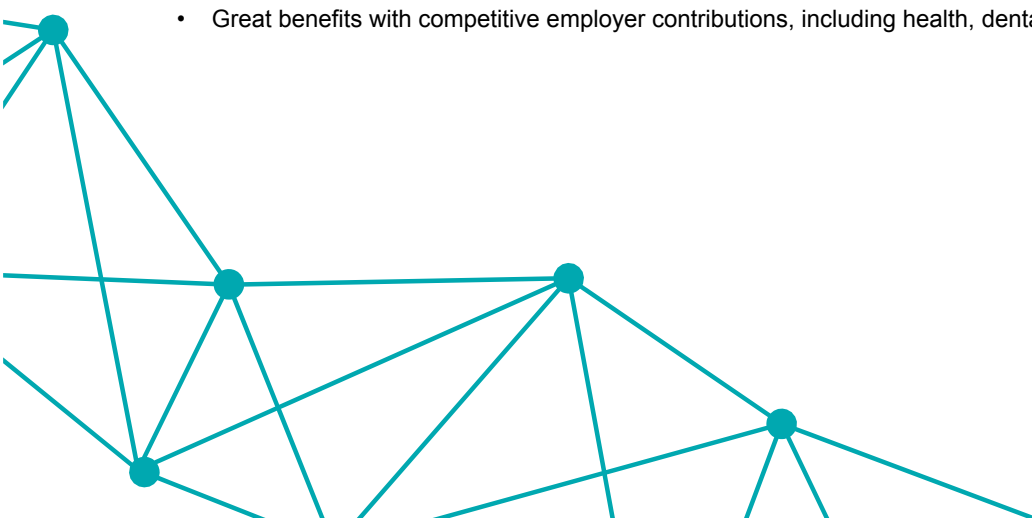
- Develops operational solutions
- Determine impact on whole logistic system together with customer
- Continuous Improvement Process
- Monitor Performance
- Improve operational quality results by studying, evaluating, and recommending process redesign

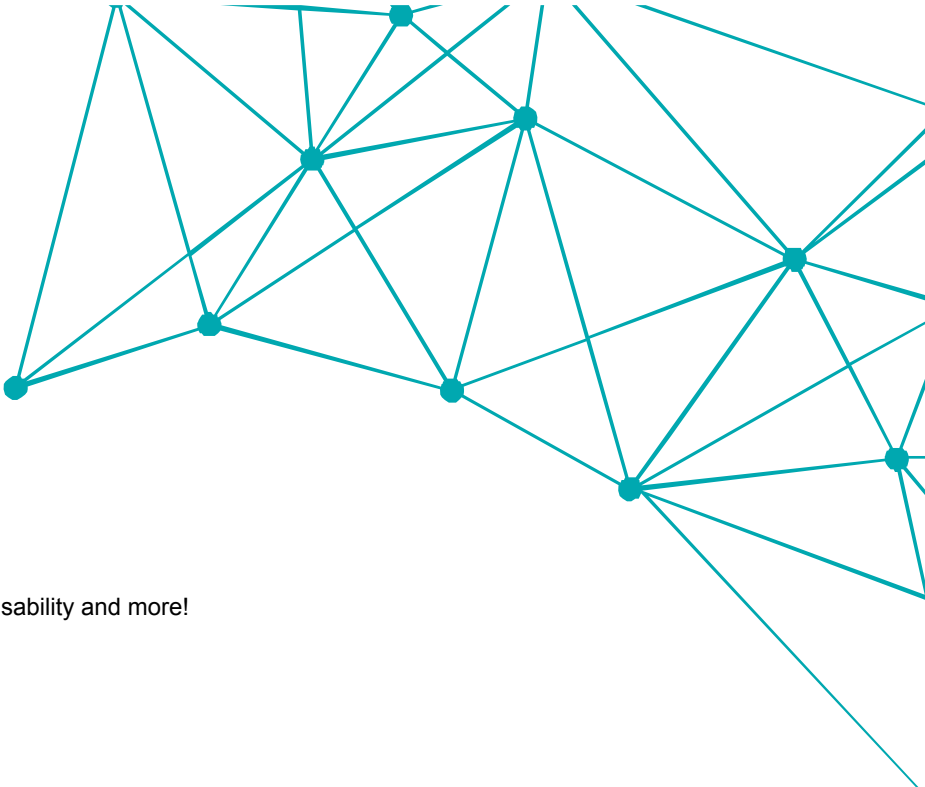
WHAT YOU HAVE

- Bachelor's Degree in Business and/or Logistics (preferred) or related field, or equivalent experience
- An understanding of warehouse operations and supply chain management
- 3-5 years related experience in warehousing, high volume manufacturing, distribution, production planning and/or transportation environment
- Knowledge of WMS, WCS and SRC
- An engineering industry background preferred
- Operational experience within an automated distribution facility
- ITIL Foundation
- Excellent verbal and written communication skills
- Self-motivated and a proactive approach to problem solving
- Proven organisational skills
- Customer focused
- Strong interpersonal skills
- Team oriented
- Ability to lead and motivate others and work autonomously with minimum supervision

WHAT YOU WILL GET

- Industry competitive compensation
- Great benefits with competitive employer contributions, including health, dental, vision, life insurance, Flexible



A decorative teal geometric pattern consisting of interconnected lines and dots, forming a network-like structure, located in the top right corner of the page.

Spending Accounts, Short & Long Term Disability and more!

- 401k with employer match and no vesting!
- Paid Vacation & Holidays
- Profit Sharing
- Paid Parental Leave
- Subsidized child-care
- Tuition Reimbursement
- Pet Insurance
- Corporate Social Responsibility including recycling, sustainability, and volunteering

KNAPP is an equal opportunity employer. We are committed to a work environment that supports, inspires, and respects all individuals without discrimination on the basis of race, color, religion, sex, sexual orientation, gender identity, age, national origin, veteran, disability status or any other basis protected by law.

Due to the safety-sensitive nature of this position, strict adherence to KNAPP's drug-free workplace policy is required. All candidates will be subject to drug-screening in accordance with the policy and will be expected to remain drug-free during their employment. There will be no exception if recreational or medical use of marijuana is permitted in the location of employment and/or residence or if use of marijuana is only during "off-hours."

