

Warehouseman

Fulltime | Kennesaw, United States

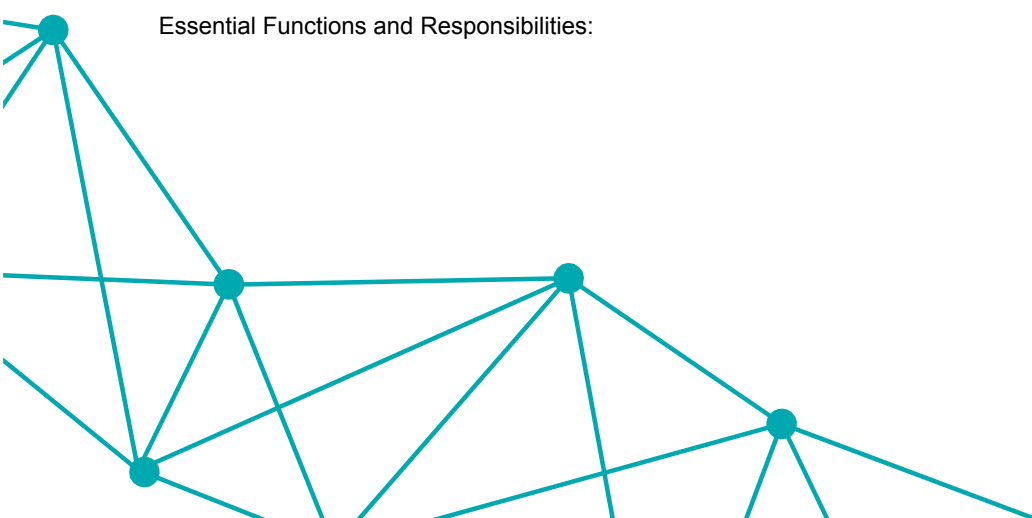
WHO WE ARE

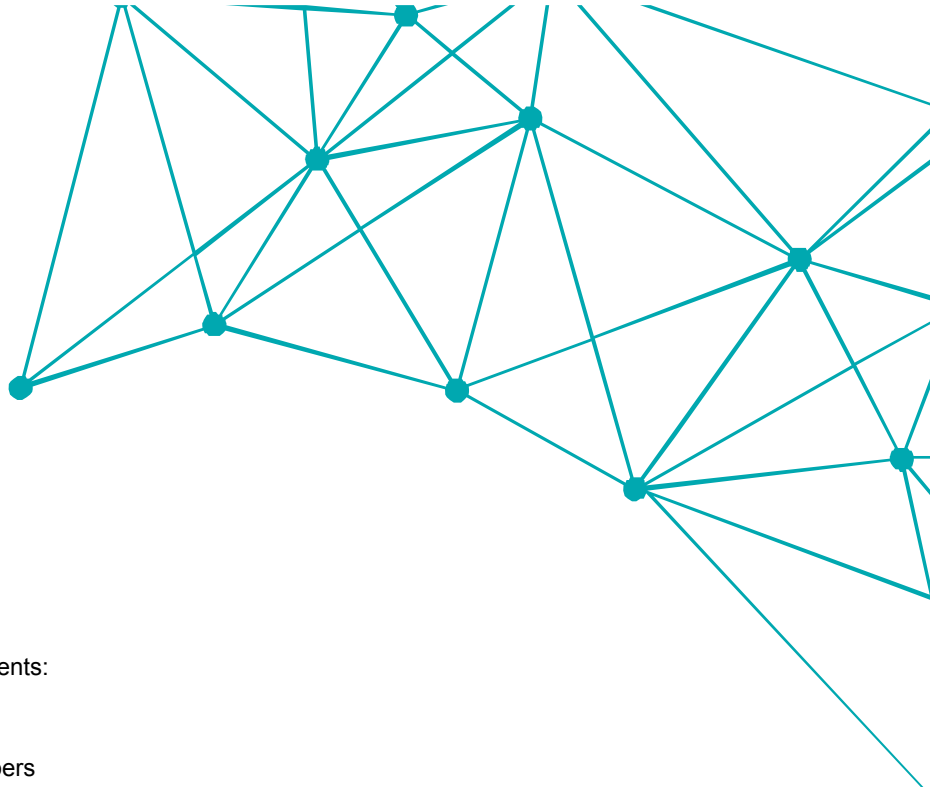
At KNAPP (pronounced K-NAP, not Nap!), we “Make Complexity Simple” by offering intelligent solutions for digitizing and automating everything from production and distribution to the last mile and stores. We are the customer’s value tech chain partner, which means partnering with the customer to create the most value within each link in their supply chain. Leveraging the latest software, AI and Robotics technology, we continue to disrupt the logistics automation industry for the world’s industry leaders in grocery, healthcare, retail, e-commerce, apparel & manufacturing. We are a global company with our US headquarters located just North of Atlanta in Kennesaw, GA. KNAPP specializes in automated solutions for both WMS (Warehouse Management Systems) and WCS (Warehouse Control Systems) for B2B (Business to Business) and B2C (Business to Consumer) customers. We are a growing company of over 7,200 employees worldwide and in over 50 countries that is privately held, with 7% of our revenue reinvested in R&D, ensuring a strong and vibrant future! Join us and see how you can help change the world! For more information, visit www.knapp.com.

WHAT YOU GET TO DO

The Warehouseman is responsible for reviewing receiving goods, put-away, picking, and shipping processes. This position coordinates activities concerned with picking products and preparing it for both domestic and international shipment. Loading and unloading of miscellaneous freight and containers for procurement and customer service.

Essential Functions and Responsibilities:





- Responsible for receiving incoming shipments:

Verify physical counts and contents

Bag and tag parts with handling unit numbers

Enter data in ERP system (SAP) and place into inventory

Provide all paperwork to shipping manager

Notify manager about any discrepancies in goods receipts

Take pictures of any damaged items: outside label, box, packing material used, and damaged product

- Verify physical counts and contents
- Bag and tag parts with handling unit numbers
- Enter data in ERP system (SAP) and place into inventory
- Provide all paperwork to shipping manager
- Notify manager about any discrepancies in goods receipts
- Take pictures of any damaged items: outside label, box, packing material used, and damaged product
- Maintain bin locations and maximize storage potential of parts
- Ensure items not shipped are properly marked
- Keep dock clear of any shipments not slated for immediate pickup
- Keep dock clear of trash and debris
- Rack incoming marketing skids, toolboxes, or other non-inventory receipts
- Create domestic and international shipping documentation such as packing lists, commercial invoices, certificates of origin
- Responsible for shipping:

Ship outgoing orders and/or return to the customer on the same day pick slip has been provided

Properly pack and/or skid and label packages, including delivery notes

Process through shipping software

Data entry into ERP system the same day items are physically shipped out of inventory

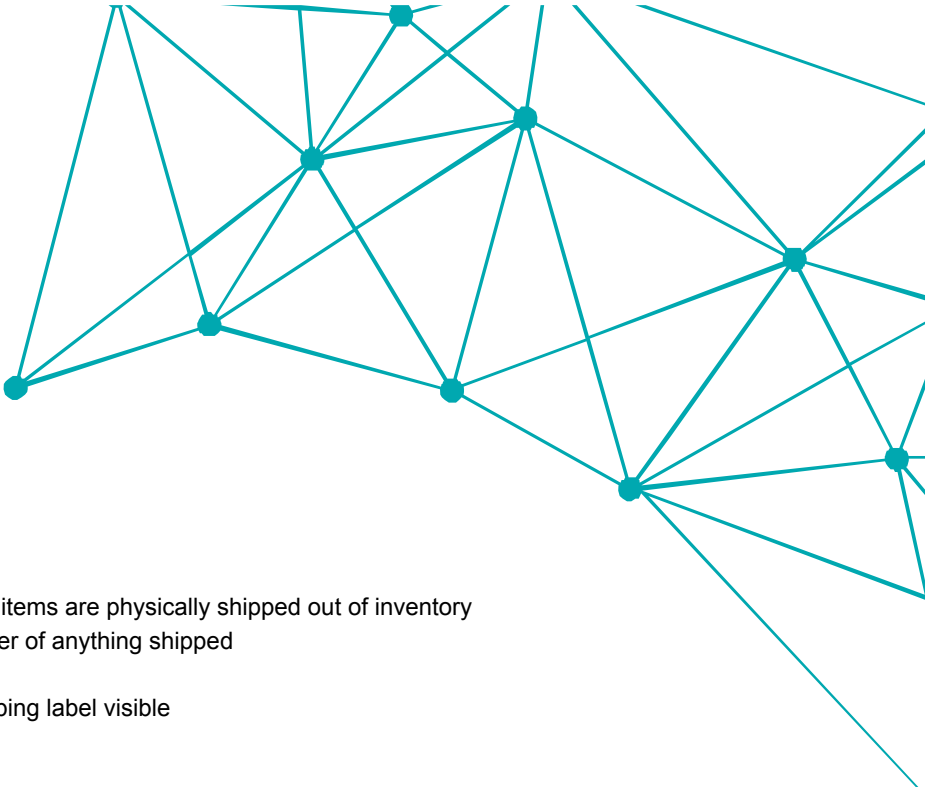
Provide documentation to shipping manager of anything shipped

Communicate any issues to manager

Take pictures of items packaged with shipping label visible

- Ship outgoing orders and/or return to the customer on the same day pick slip has been provided
- Properly pack and/or skid and label packages, including delivery notes
- Process through shipping software



- 
- A decorative teal geometric pattern consisting of interconnected lines and dots, forming a network of triangles and polygons, located in the top right corner of the page.
- Data entry into ERP system the same day items are physically shipped out of inventory
 - Provide documentation to shipping manager of anything shipped
 - Communicate any issues to manager
 - Take pictures of items packaged with shipping label visible

WHAT YOU HAVE

- Overtime, if required by work
- Occasional travel might be required, less than %
- Authorized to work in the U. S.
- Passport or ability to obtain one
- Professional office etiquette is required at all times
- Physical requirements may include: sitting, standing, walking, squatting, and lifting up to 100 pounds.

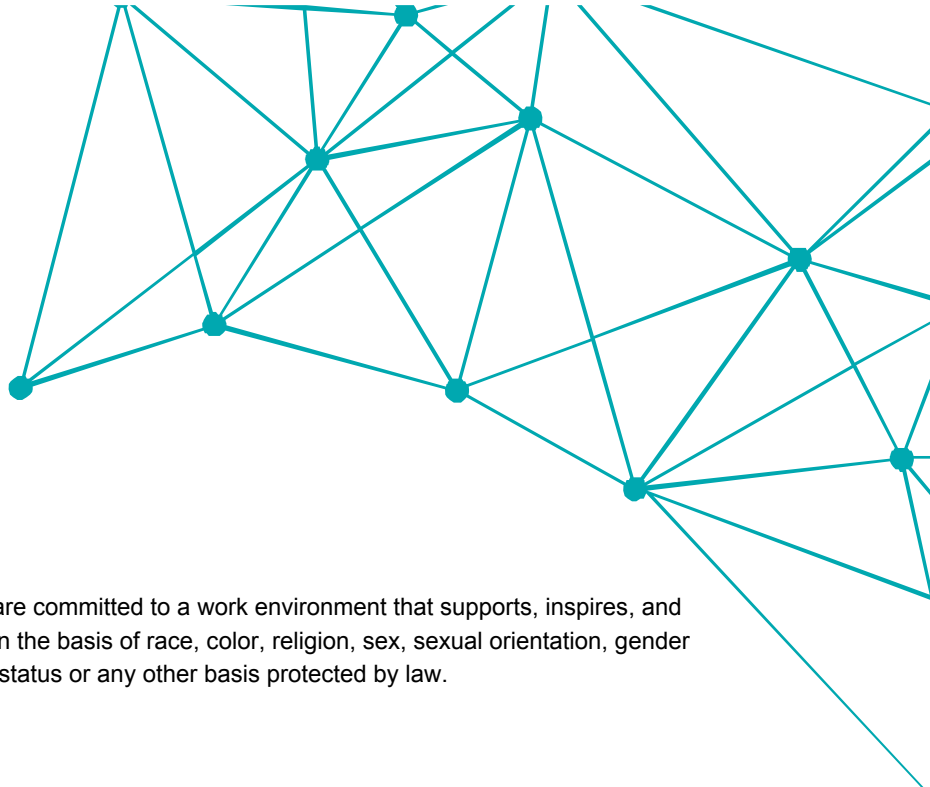
WHAT YOU WILL GET

- A beautiful new, state-of-the-art, office complex in Kennesaw, GA
- Industry competitive compensation
- Great benefits with better than average employer contributions, including health, dental, vision, life insurance, Flexible Spending Accounts, Short & Long Term Disability and more!
- 401k with a very generous employer match and no vesting!
- Paid Vacation & Holidays
- Profit Sharing
- Paid Parental Leave
- Subsidized Daycare
- Tuition Reimbursement
- Pet Insurance
- Subsidized food delivery
- Monthly celebrations
- Quarterly employee events
- Corporate Social Responsibility including recycling, sustainability and volunteering



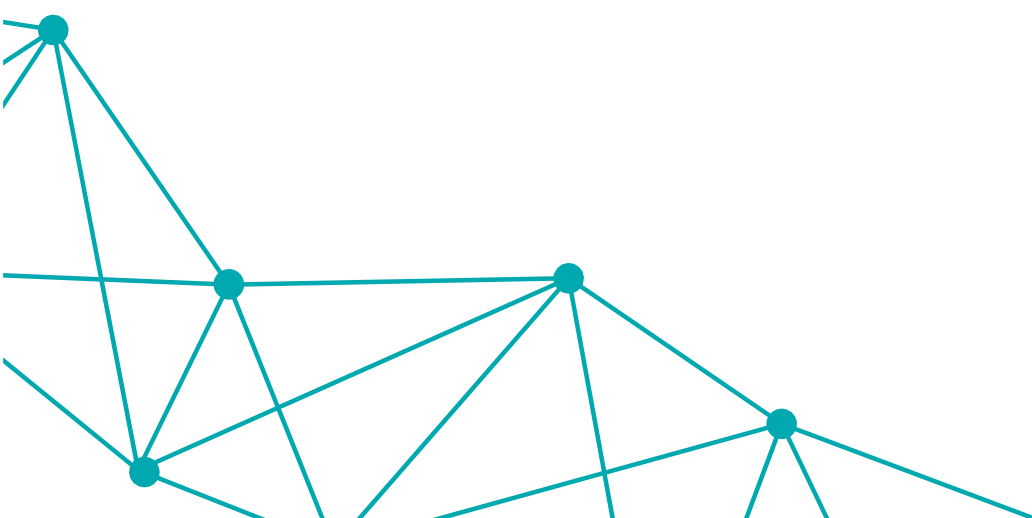


knapp.com



KNAPP is an equal opportunity employer. We are committed to a work environment that supports, inspires, and respects all individuals without discrimination on the basis of race, color, religion, sex, sexual orientation, gender identity, age, national origin, veteran, disability status or any other basis protected by law.

Due to the safety-sensitive nature of this position, strict adherence to KNAPP's drug-free workplace policy is required. All candidates will be subject to drug-screening in accordance with the policy and will be expected to remain drug-free during their employment. There will be no exception if recreational or medical use of marijuana is permitted in the location of employment and/or residence or if use of marijuana is only during "off-hours."



Applications via
knapp.com/en/career

