

# Site Safety Manager

Fulltime | FIELD, United States

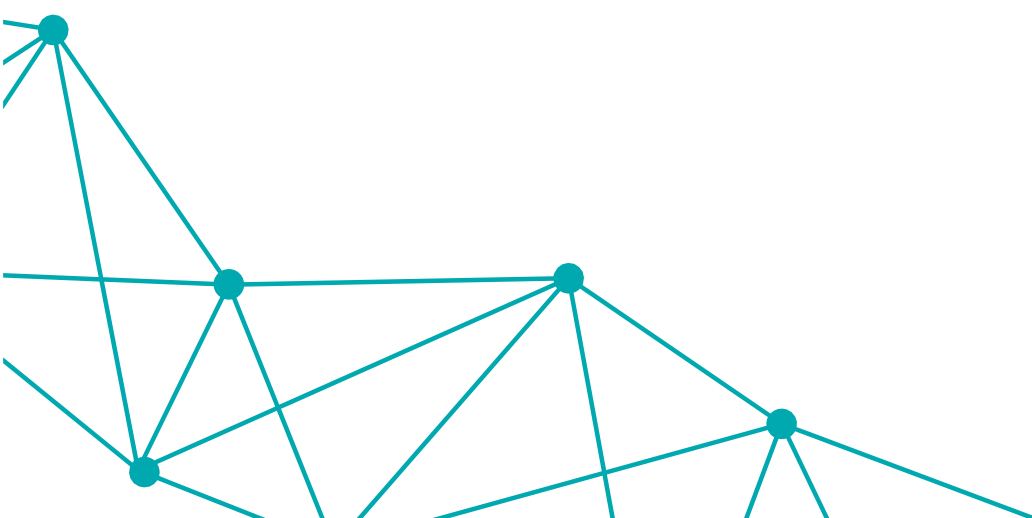
## WHO WE ARE

At KNAPP (pronounced K-NAP, not Nap!), we “Make Complexity Simple” by offering intelligent solutions for digitizing and automating everything from production and distribution to the last mile and stores. We are the customer’s value tech chain partner, which means partnering with the customer to create the most value within each link in their supply chain. Leveraging the latest software, AI and Robotics technology, we continue to disrupt the logistics automation industry for the world’s industry leaders in grocery, healthcare, retail, e-commerce, apparel & manufacturing. We are a global company with our US headquarters located just North of Atlanta in Kennesaw, GA. KNAPP specializes in automated solutions for both WMS (Warehouse Management Systems) and WCS (Warehouse Control Systems) for B2B (Business to Business) and B2C (Business to Consumer) customers. We are a growing company of over 7,200 employees worldwide and in over 50 countries that is privately held, with 7% of our revenue reinvested in R&D, ensuring a strong and vibrant future! Join us and see how you can help change the world! For more information, visit [www.knapp.com](http://www.knapp.com).

## WHAT YOU GET TO DO

The Site Safety Manager is responsible for all safety related project metrics during the On-Site Phase and has safety related authority over the project team.

## Essential Tasks and Responsibilities:



- Monitor the installation of mechanical/electrical installation
- Monitor the start-up and software installation
- Function as the safety contact person for subcontractors
- Function as the contact person for Health and Safety Manager
- Conduct risk assessments for the installation site; instruct and coordinate Knapp employees, employees of subsidiaries and subcontractors on-site
- Monitor and coordinate the prevention and mitigation measures regarding health, safety, and environment
- Lead and record regular safety meetings
- Check all safety-relevant issues during regular inspections
- Setup of the Knapp Safety Portal and update daily throughout the project
- Perform daily and weekly site safety audits
- Function as the contact person for all accidents, near misses, and incidents and record the results as per the Knapp accident reporting procedure.
- Restrict and/or cease work activities, as needed, while safety issues are resolved
- Ensure compliance with all applicable federal, state, local and AWJ safety rules and regulation regarding health and safety
- Exercise the right and duty to issue yellow and red cards as disciplinary actions
- Work with Knapp's site manager to ensure restricted access of the building site is enforced
- Check and maintain the display of statutory notices and emergency instructions
- Issue work permits as required

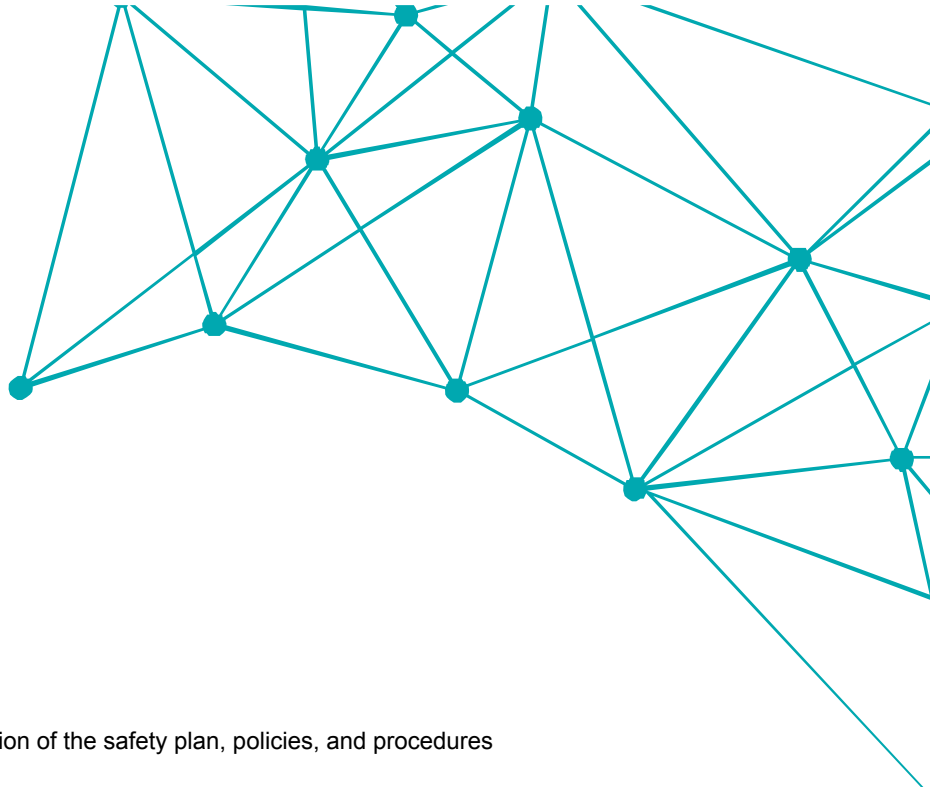
#### Training & Maintenance

- Responsible for continuous improvement and training to ensure compliance with all applicable legal requirements pertaining to OHS
- Participate in the development of training materials and procedures
- Review procedure and training materials for compliance

#### Communication

- Effectively communicate relevant safety-related information to subcontractors
- Regularly meet with all subcontractors to ensure compliance with standards
- Create weekly safety reports and other safety reports as required by the project





### Management

- Exercise staff oversight to ensure application of the safety plan, policies, and procedures

### Leadership

- Achieve excellence in all areas of business
- Champion change and effectively manage the implementation of new ideas

### Teamwork

- Reinforce team approach throughout practice both on customer projects and internal initiatives
- Support and solicit input from team members at all levels within the organization
- Ensure regular communication with all subcontractors at the site

### Customer Management

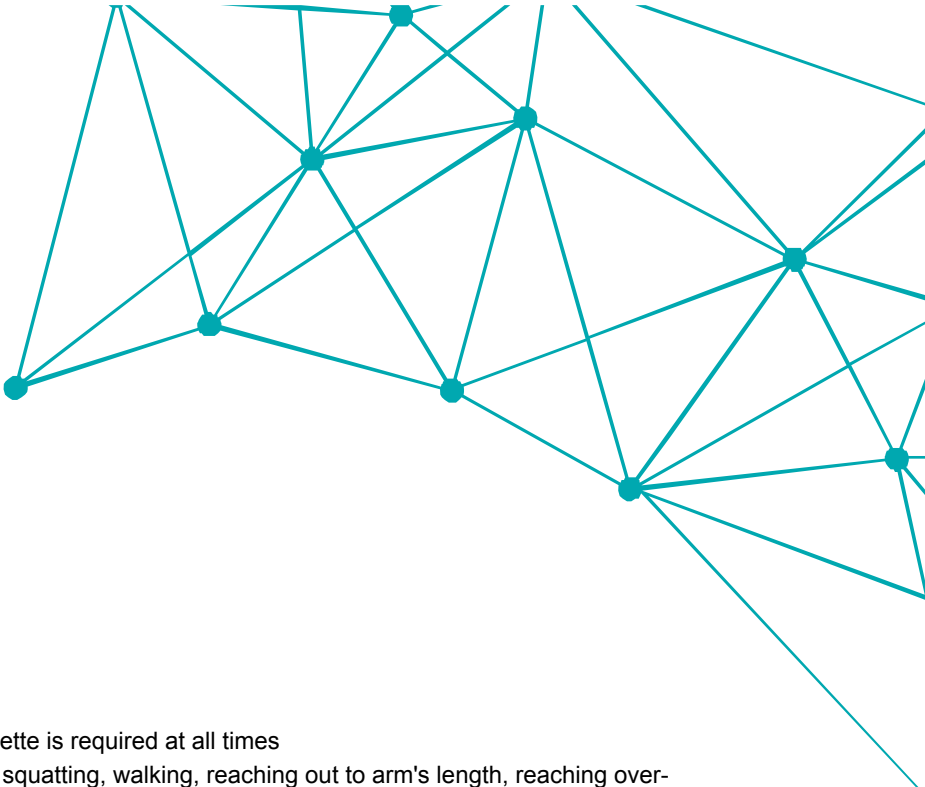
- Communicate effectively with colleagues and customers to identify needs and evaluate alternative business solutions and strategies
- Continually define ways to increase internal & external knowledge and deepen the understanding of health and safety practices
- Maintain lasting customer relationships

### WHAT YOU HAVE

- OSHA 500 (Construction) and/or OSHA 501 (General Industry) Certified. OSHA 30 may be considered if demonstrating a history of successfully working within the OHS environment
- Maintain professional certifications and continuing education through CEU's

### Working Conditions and Environment:



- 
- A decorative graphic in the top right corner consisting of a network of teal lines connecting several circular nodes, forming a complex web-like structure.
- Frequent Travel required, up to 100%
  - Valid Driver's License
  - Professional office and customer site etiquette is required at all times
  - Physical requirements may include sitting, squatting, walking, reaching out to arm's length, reaching overhead, lifting between 50-100 pounds, and reading

#### WHAT YOU WILL GET

- Industry competitive compensation
- Great benefits with better than average employer contributions, including health, dental, vision, life insurance, Flexible Spending Accounts, Short & Long Term Disability and more!
- 401k with a very generous employer match and no vesting!
- Paid Vacation & Holidays
- Profit Sharing
- Paid Parental Leave
- Subsidized Daycare
- Tuition Reimbursement
- Pet Insurance

KNAPP is an equal opportunity employer. We are committed to a work environment that supports, inspires, and respects all individuals without discrimination on the basis of race, color, religion, sex, sexual orientation, gender identity, age, national origin, veteran, disability status or any other basis protected by law.

Due to the safety-sensitive nature of this position, strict adherence to KNAPP's drug-free workplace policy is required. All candidates will be subject to drug-screening in accordance with the policy and will be expected to remain drug-free during their employment. There will be no exception if recreational or medical use of marijuana is permitted in the location of employment and/or residence or if use of marijuana is only during "off-hours."

