



Mechatronics Controls Engineer

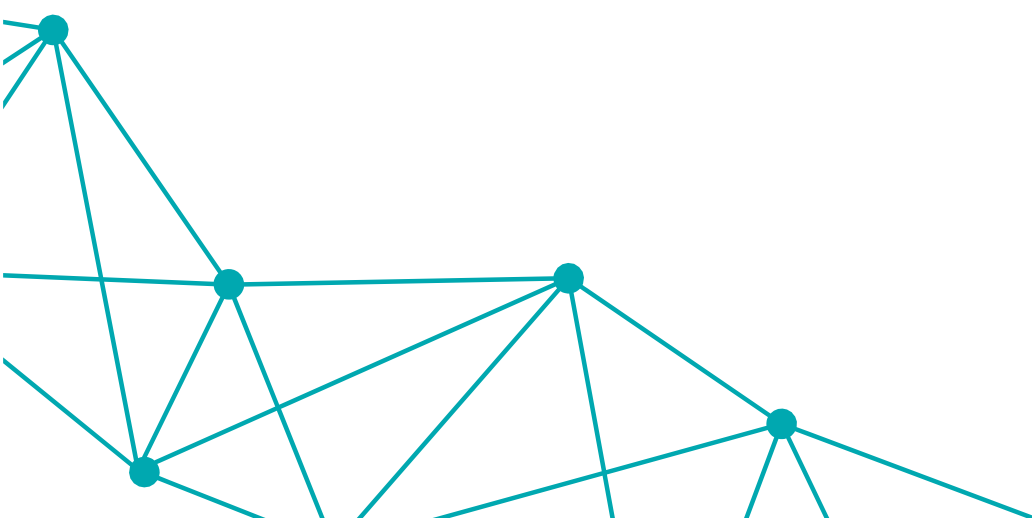
Fulltime | Elmhurst, United States

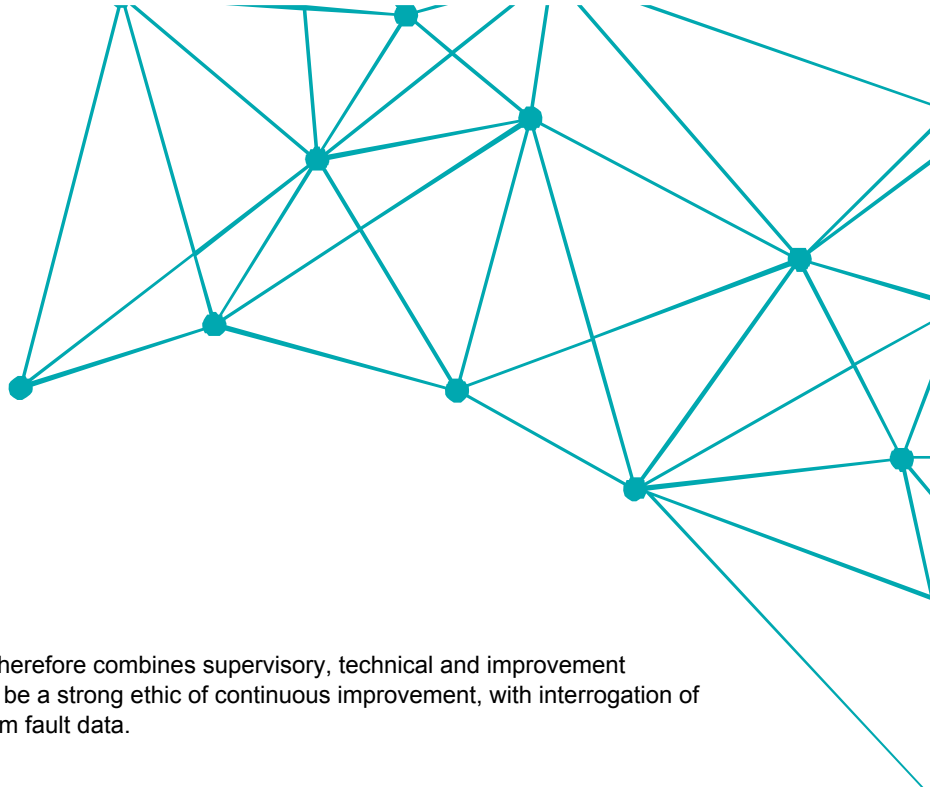
WHO WE ARE

At KNAPP (pronounced K-NAP, not Nap!), we “Make Complexity Simple” by offering intelligent solutions for digitizing and automating everything from production and distribution to the last mile and stores. We are the customer’s value tech chain partner, which means partnering with the customer to create the most value within each link in their supply chain. Leveraging the latest software, AI and Robotics technology, we continue to disrupt the logistics automation industry for the world’s industry leaders in grocery, healthcare, retail, e-commerce, apparel & manufacturing. We are a global company with our US headquarters located just North of Atlanta in Kennesaw, GA. KNAPP specializes in automated solutions for both WMS (Warehouse Management Systems) and WCS (Warehouse Control Systems) for B2B (Business to Business) and B2C (Business to Consumer) customers. We are a growing company of over 7,200 employees worldwide and in over 50 countries that is privately held, with 7% of our revenue reinvested in R&D, ensuring a strong and vibrant future! Join us and see how you can help change the world! For more information, visit www.knapp.com.

WHAT YOU GET TO DO

The task of a Mechatronics Controls Engineer is to provide technical expertise to support the Knapp Engineering Shift Leader and Knapp Hotline in providing a highly available automation system, that works properly and meets customer and Knapp specifications, which will be measured through key performance indicators. The individual will be a member of the engineering team and will also act as the Deputy Shift Leader stepping up in the absence of the Engineering Shift Leader. The role will also cover emergency breakdown and maintenance support on all equipment and software issues on the installed equipment.





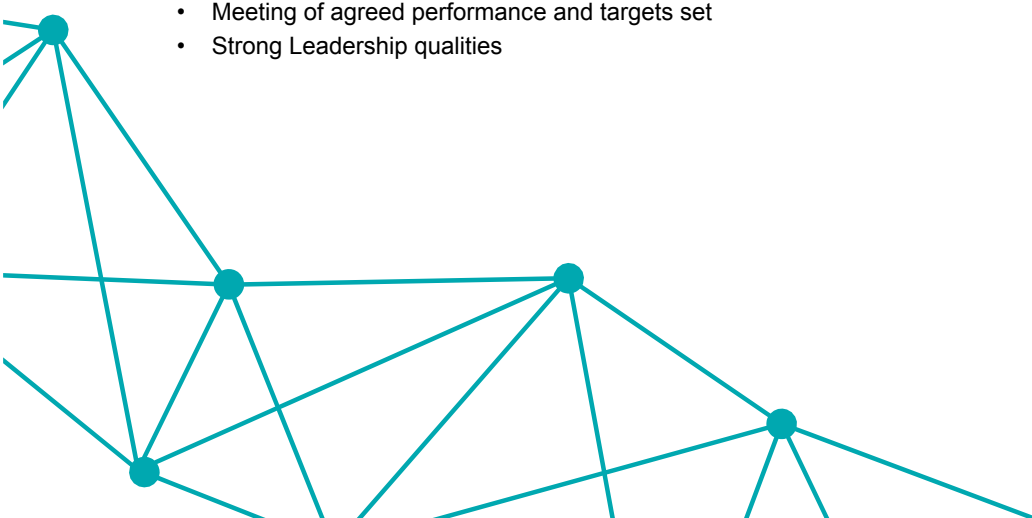
The role of a Mechatronics Controls Engineer therefore combines supervisory, technical and improvement responsibilities. Alongside the above, there will be a strong ethic of continuous improvement, with interrogation of the Scada, Shuttles, and Knapp software system fault data.

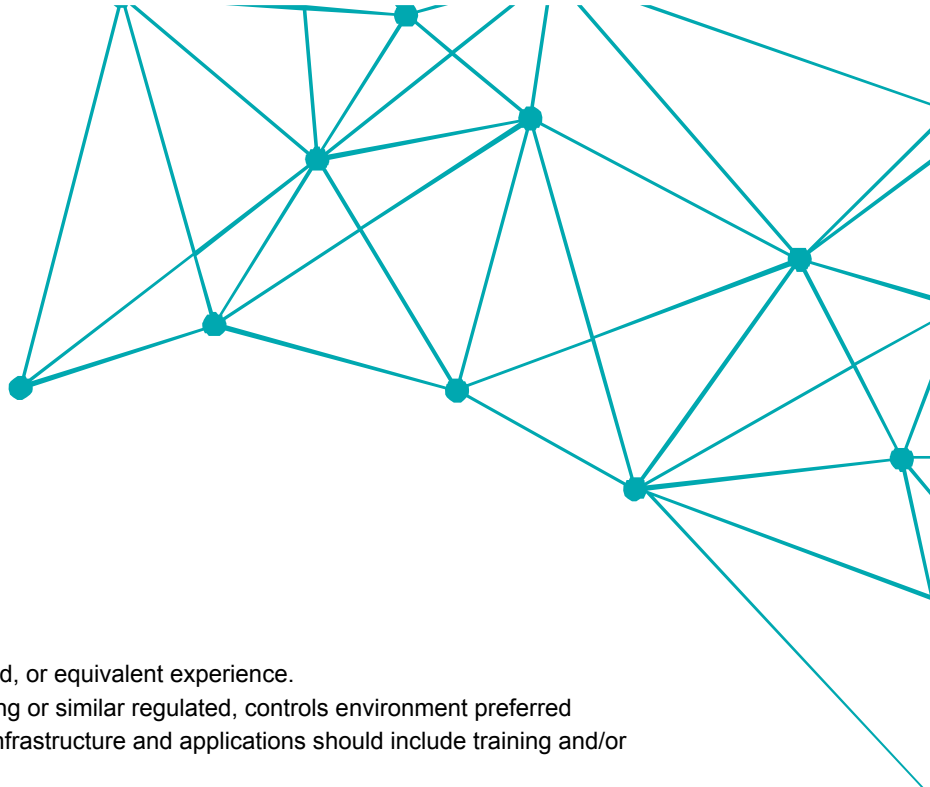
Essential Tasks and Responsibilities:

- In conjunction with Knapp technicians, provide a first-class site response to the customer, ensuring as far as reasonably practical a first-time right policy
- Involvement in Daily Review Meetings as and when required, both with the customer and Knapp, providing detailed information as required
- Identify, develop and support Hotline in implementing automation system and program changes to support operational processes, investigations and continuous improvement activities
- Ensure the validated status of automation assets is maintained by the use of change control and configuration management
- Provide Emergency breakdown onsite support to Hotline and the resident Team
- Keep up to date with technologies to ensure the appropriate solutions are utilized for maximum business benefit
- Be part of the Issue Management and the internal escalation process on all related maintenance and breakdown issues, in partnership with the customer
- Create strong effective working relationships with customers and your team, to enable Knapp to provide a first-class service
- Work alongside the Engineering Team Leader and in his absence coordinate the activities of site technicians and third-party repair companies on site

Other Duties and Responsibilities:

- To be a competent and supportive team member
- Self-motivated and a proactive approach to problem solving is essential
- Ability to work under pressure
- Capacity to work as part of a team
- Meeting of agreed performance and targets set
- Strong Leadership qualities





WHAT YOU HAVE

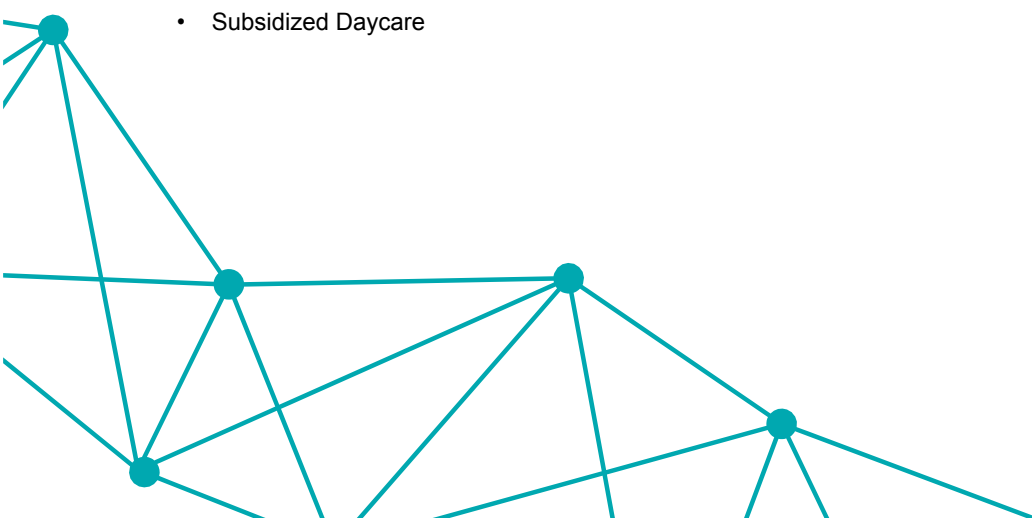
- Bachelor's degree in a related field required, or equivalent experience.
- Experience in automated materials handling or similar regulated, controls environment preferred
- Controls Engineering skills through to IT infrastructure and applications should include training and/or experience in a selection of the following:
 - Communication networks and protocols (serial, Profibus, Ethernet)
 - Instrumentation (sensors, actuators, PMT) Machine Control Knowledge
 - Basic knowledge of PLC programming control systems (S7 or Allen Bradley)
 - Using Siemens S7 or Totally Integrated Automation (TIA)
 - Capable of programming PLCs
 - Basic knowledge of electrical systems

Working Conditions and Environment:

- Overtime, if required by work
- Authorization to work in the U.S
- Passport or ability to obtain passport
- Professional office etiquette is required at all times.
- Physical requirement: Sitting, stooping, bending, visual acuity, finger dexterity, walking, lifting up to 50 pounds.

WHAT YOU WILL GET

- Industry competitive compensation
- Great benefits with better than average employer contributions, including health, dental, vision, life insurance, Flexible Spending Accounts, Short & Long Term Disability and more!
- 401k with a very generous employer match and no vesting!
- Paid Vacation & Holidays
- Profit Sharing
- Paid Parental Leave
- Subsidized Daycare



- Tuition Reimbursement
- Pet Insurance

KNAPP is an equal opportunity employer. We are committed to a work environment that supports, inspires, and respects all individuals without discrimination on the basis of race, color, religion, sex, sexual orientation, gender identity, age, national origin, veteran, disability status or any other basis protected by law.

Due to the safety-sensitive nature of this position, strict adherence to KNAPP's drug-free workplace policy is required. All candidates will be subject to drug-screening in accordance with the policy and will be expected to remain drug-free during their employment. There will be no exception if recreational or medical use of marijuana is permitted in the location of employment and/or residence or if use of marijuana is only during "off-hours."

