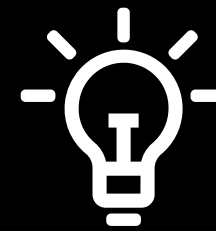




## Changing supply chains

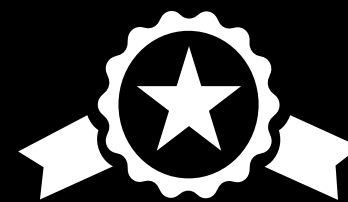
Whether it's new consumer trends or evolving dynamics in local and global value chains, unique challenges are shaping logistics



**Customization and new business models**  
Lot size 1, same and next-day delivery, low predictability of business developments, micro fulfillment, click & collect



**Profitability and availability**  
Lack of space, growing range of goods, rising costs per item, increasing real estate prices, returns processing, labor shortages



**Speed and quality** Omni-channel fulfillment, traceability, transparency, reduced lead times

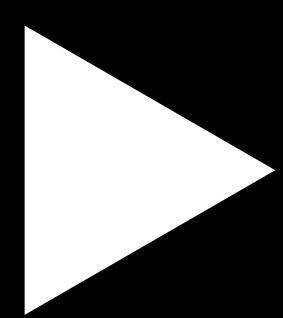
The Evo Shuttle is the solution to overcome these challenges.

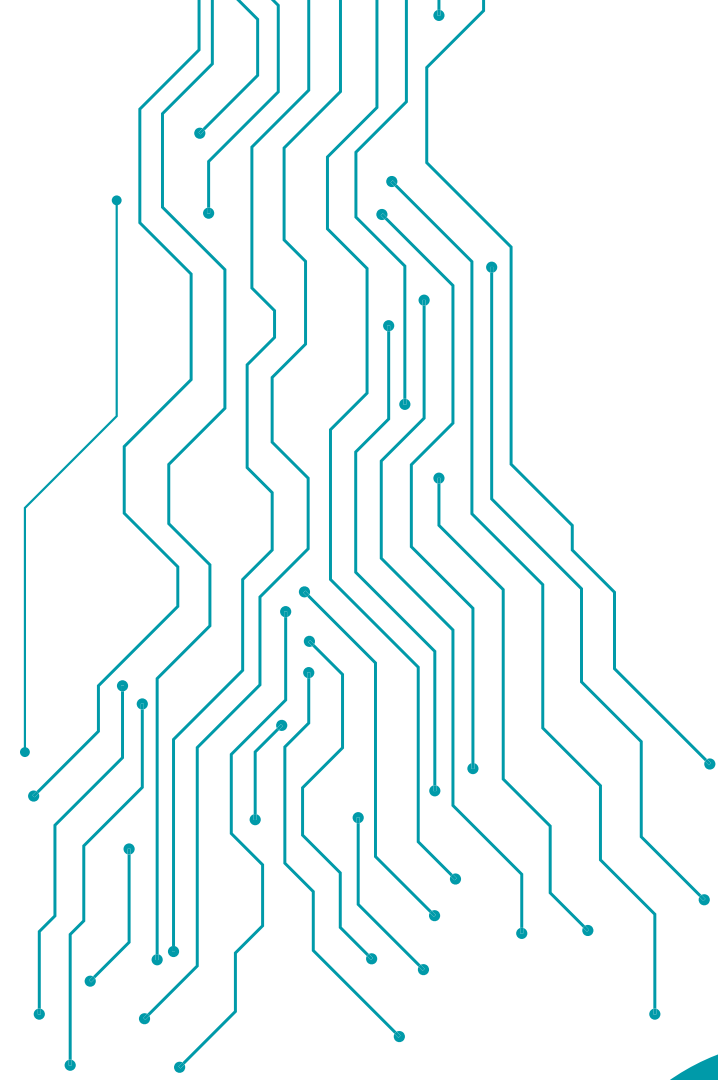
*We chose the Evo Shuttle because it lets us complete our orders significantly faster and makes processing more flexible.*

Olivier Dominguez  
Plant Manager, ASICS

## Evo Shuttle

More than storage. The core of performance.

<p><b>All-in-one</b> Storage, buffering, replenishment, sequencing</p>	<p><b>Multiple-deep storage</b> Containers, trays, direct storage of cartons, up to 50 kg (110.23 lb)</p>	<p><b>Outer dimensions</b> 250 x 250 to 850 x 650 mm, (9.84 x 9.84 to 33.46 x 25.59 in)</p>	<p><b>Mix &amp; Match</b> Goods-to-person and goods-to-robot</p>
<p><b>Performance on demand</b> Scale performance and storage locations</p>	<p><b>Control system</b> KiSoft or SAP® EWM by KNAPP</p>	<p><b>Highest safety</b> For both people and inventory</p>	<p><b>1D &amp; 2D shuttles</b> The ideal solution for every requirement</p>
<p><b>Complete sequences</b> Straight from the system</p>	<p><b>Since 2001</b> Proven shuttle technology</p>	<p><b>24/7 service worldwide</b></p>	



Forge new paths for logistics.

## Process optimization

Shuttle system or stacker crane? There's a huge range of automated small parts warehouses. However, it isn't the technology that's important, but the question:

**How can the system ideally support your operation?**

The Evo Shuttle handles important processes in a single system.

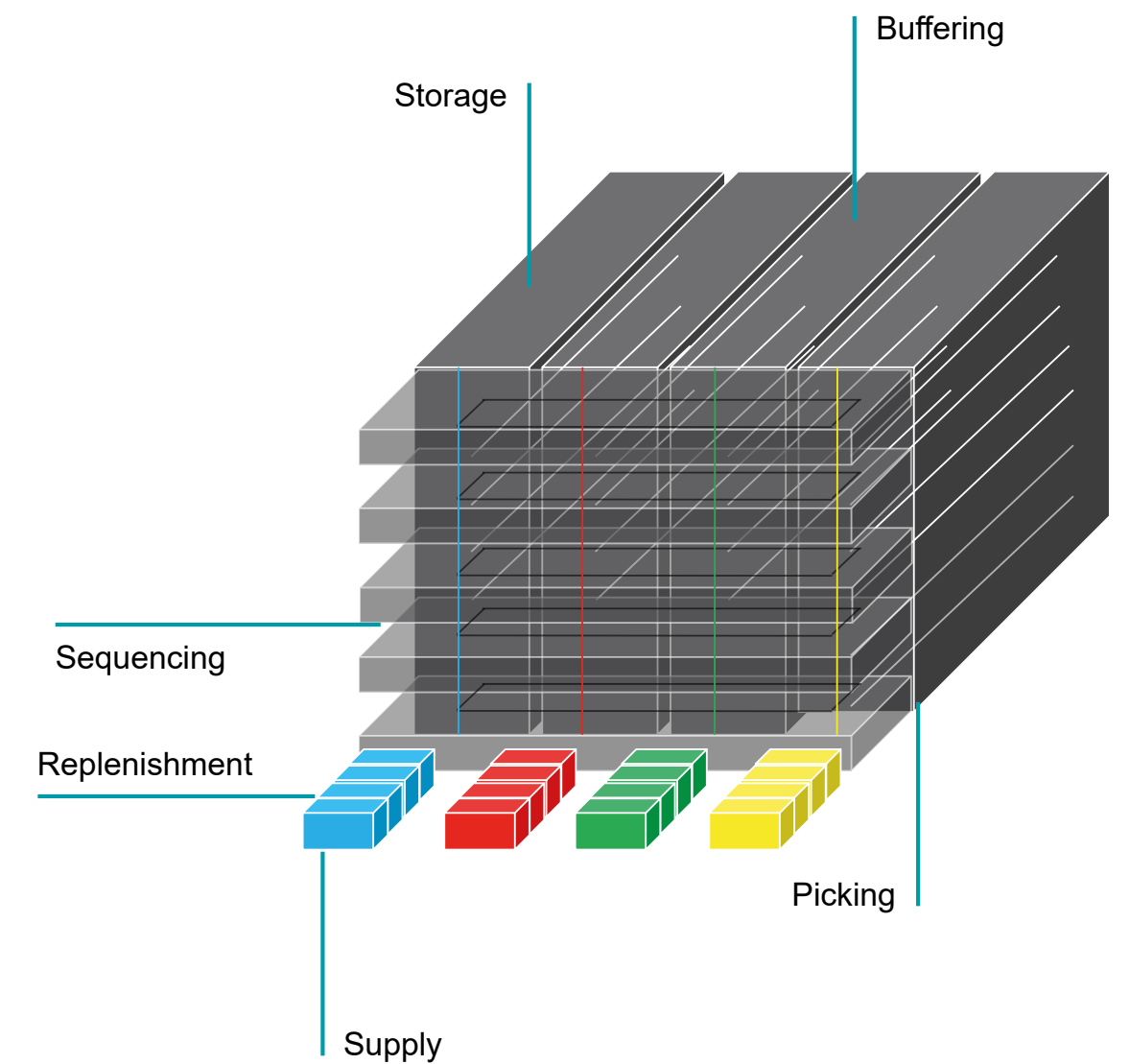
### Process innovation with the Evo Shuttle

- **Storing** stock and overstock
- **Picking** and value-added services
- **Buffering** orders or semi-finished products
- **Replenishing** work areas
- **Supplying** workstations
- **Sequencing** goods, parts and orders

Evo Shuttle is an intelligent tool for efficiently fulfilling orders in distribution centers, manufacturing or for microfulfillment solutions.

## Economical and flexible

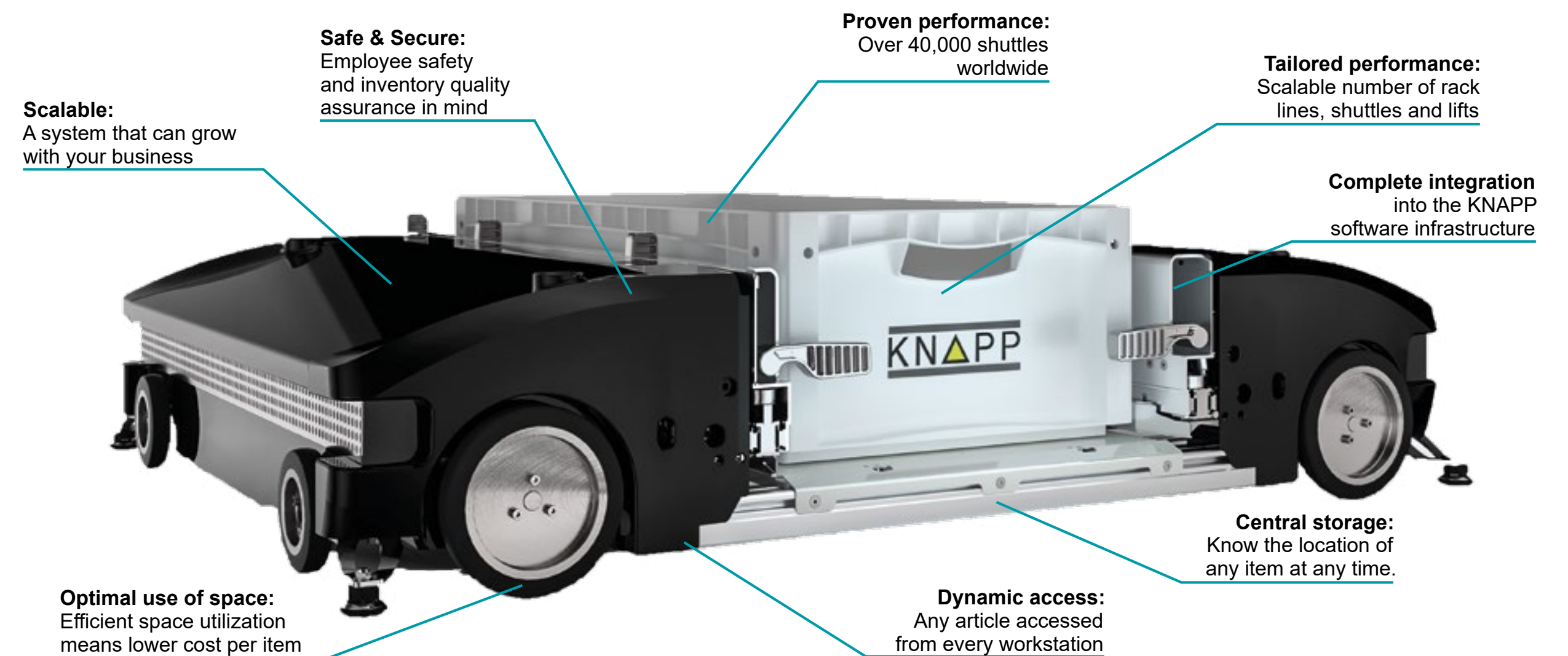
Whether handling shirts and perfume, or eggs, drive shafts, bulk material and teddy bears: The Evo Shuttle is ideally suited for the efficient storage and handling of a wide range of goods and raw materials. Optimal storage density and reduced costs per item can be achieved using multiple-deep storage, different load carriers and intelligent storage strategies.



## A system that grows

Increasing available inventory? Experiencing peak times or just a real boom in business? Planning to introduce new business channels or internal processes changing to meet new demands? How will your business develop in the coming years? Are you ready to make the goals of today a reality tomorrow?

With its scalable system design and complete integration into the KNAPP software landscape, the Evo Shuttle caters to both current and future demands. This means that the most economical solution is available to ensure efficient order fulfillment during each step of expansion.





# Mix & Match

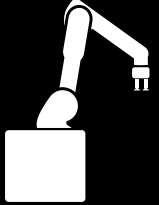
Nowadays, success is a result of intelligently combined technologies with a perfectly engineered process flow. Working in the smartest way, when paired with these technologies the Evo Shuttle creates an unstoppable team.



### Goods-to-person work stations

Process orders, inventory, returns etc. ergonomically and efficiently.

#### Pick-it-Easy

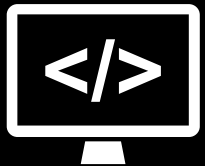


### Robots and AI

Intelligent solutions for automatic single item picking, palletizing and flexible transports.

#### Pick-it-Easy Robot | Runpick

#### Open Shuttles | Evo Shuttle+



### Software

Software for warehouse management, machine control and analytics from a single supplier.

#### KiSoft | SAP® EWM by KNAPP

# Efficiency Flexibility Integration



We look forward to your message:  
sales@knapp.com



Find your KNAPP partner near you:

follow us:

